



Cairngorms National Park Core Paths Plan

Consultation and Engagement Process - Stage 1

Community Engagement & Results – Glenlivet & Tomintoul area

Introduction

The core paths plan process targeted four main interest groups to engage with, these included; communities, land managers, people who recreate in the National Park (visitors and residents including businesses, national organisations and clubs e.g. Ramblers, Scottish Canoe Association, Cairngorm Club etc.) and visitors to the National Park (those who may not specifically come to the Park to recreate but may do so whilst they are here). The following report details how the Cairngorms National Park Authority (CNPA) engaged with the public for the Glenlivet & Tomintoul area, the people who participated in the engagement process and the feedback and results that they provided.

Engaging with the public for the Glenlivet & Tomintoul area

The engagement period ran from 1st September to 30th November 2006. Questionnaires for the Glenlivet & Tomintoul Area were made available on the CNPA website, through contacting the CNPA directly and at drop-in events across the National Park. In the area, community drop-in events were run in Glenlivet and Tomintoul to enable people to find out more about core paths planning and to advise the CNPA of the routes, paths and areas that are important to them and why. A feedback report for the Tomintoul settlement is also available. A questionnaire was also made available for Tomintoul.

The community drop-in events were run to enable people in the area to find out more about core paths planning and to advise the Cairngorms National Park Authority (CNPA) of the routes, paths and areas that are important to them and why. The drop-in event for Glenlivet was held at the Community Hall on Thursday, 13 November from 4:00pm to 8:00pm. CNPA staff Andy Ford and Bob Grant were present throughout the period.

Drop-in Event Promotion

The event was advertised in the Northern Scot and was also the subject of a press release. Invitations were sent out to all local land owners/tenants and the community council. Posters were displayed around the area a week in advance of the event and fresh posters were put up on the day of the meeting including a large board outside the event. In addition, contact was made with the school and the community through one of the Park Authority's Community Liaison Officers.

Drop-in Event Format

Participants were provided with a core paths planning leaflet. This included details of the core paths plan process in the Cairngorms National Park as well as answers to some frequently asked questions. Participants were also provided with questionnaires and maps to record their views. A questionnaire containing a map was available for each settlement in the Park as well as for the wider areas of the Park. Large maps of the wider area were also available to help people identify routes out with settlements. There was also an opportunity for people to record their views on the path network in the area in relation to what they thought was good or bad about it or what could be improved, this was recorded in an 'H-Diagram' format.

Drop-in Event Feedback

Approximately 18 people attended the event, a total of 15 questionnaires were completed at the event and a number of people took questionnaires away to complete in their own time. Participants were asked to complete an evaluation sheet of the Glenlivet event, the results recorded are as follows:

	% of Participants Responding			
	Very Useful	Useful	Not Useful	Waste of Time
Location	100%	0%	0%	0%
Venue	80%	20%	0%	0%

People were also asked what they think is good and bad about the network and what could be improved. The results are shown below, the comments are recorded exactly as written by participants.

Comments on the Glenlivet Network		
What is bad about the network?	What is good about the network?	How the network could be improved?
<ul style="list-style-type: none"> • Sign posts for circular / manageable walks (a contrary view was expressed that these paths are signposted) • Lack of info • Irresponsible dog walkers should clear up after their pets. Fouling on paths and by stiles / gates detracts from the quality of the walks which are excellent • Lack of safe routes along highways – better maintenance of grass verges needed to enable walking off the road. 	<ul style="list-style-type: none"> • Good expanse of paths • Crown Estate info full and informative (this point was echoed by 3 other respondents) • Clear waymarking • Leaflet includes estimate of time taken and condition expected • Excellent leaflets, maps, website, information centre • All of the above • Crown Estate has put in place a good variety of walks in area which have signposting & stiles / gates which are also checked regularly. 	<ul style="list-style-type: none"> • Information on walks, more of • Better access for wheelchair / push chair users • An all abilities path would be an advantage to the area.

The general discussion with participants at the drop-in event portrayed a positive view about the existing path network and was praiseworthy about the efforts of the Crown Estate in this regard.

Map Results

People were given the opportunity to provide their views on the Glenlivet & Tomintoul area via questionnaires and at events. People were asked to identify the paths that are important to them on a map in the questionnaire, they were also asked to identify any new routes or areas that they would like to have easier access to and were encouraged to make comments. Participants at events throughout the National Park were asked to annotate large maps highlighting their popular routes in detail and also adding comments. Where someone made a comment on the maps this has been listed in a table shown in Annex 1. The routes identified by people for the Glenlivet & Tomintoul area are shown in Annex 2. Each comment has a number attributed to

it to enable cross-referencing with the map in Annex 2 (only where the comment is specific to a geographic area). The routes shown in a solid line are those which people identified as being important to them. The dashed lines are proposed routes that people identified.

Questionnaire Results

A total of 18 questionnaires were received for the Glenlivet & Tomintoul area. The responses to each of the questions are outlined below.

What outdoor activities do you currently do in and around Glenlivet & Tomintoul?

Activity	% of respondents who undertake the activity
Low level walking	78%
Dog walking	33%
Hill walking	83%
Running	11%
Getting about in a wheelchair	0%
Walking with a pushchair	6%
Cycling on-road	22%
Cycling off-road	39%
Horse-riding	6%
Watersports	6%
Winter sports	33%
None	0%
Other	0%

Why do you do these activities?

Reason	% of respondents who identified the reason
To keep fit/healthy	83%
Enjoying the Countryside	94%
Travel to work/school	11%
Getting about	39%

Other	0%
-------	----

What activities would you like to see better opportunities for in and around the area?

Activity	% of respondents who identified the activity
Low level walking	6%
Dog walking	11%
Hill walking	11%
Running	6%
Getting about in a wheelchair	17%
Walking with a pushchair*	17%
Cycling on-road*	6%
Cycling off-road	17%
Horse-riding	0%
Watersports	0%
Winter sports	17%
None	11%
Other**	11%

*Comment: 'Need paths on roadsides for safety'

**Other activities identified were 'Motor Vehicle access for disabled' and 'Already well provided for'.

Would better opportunities for these activities encourage you to;

Reason	% of respondents who identified each activity
Walk to work/school	11%
Cycle to work/school	0%
Try new activities	22%
Get fit	22%
Get outdoors more	28%
Other*	6%

*Other reasons identified were 'Would encourage more children'.

Summary

During the public engagement process it was found that the Crown Estate paths and the Speyside Way spur are popular and well used. There is a need to improve and repair the surface of the Speyside Way spur into Tomintoul. Hillwalking was the most popular activity in the area followed by low-level walking with most people doing activities to keep fit and healthy and equally to enjoy the countryside. There is quite low demand for better opportunities for outdoor access in the area which may reflect the excellent existing provision.

Reflections

There was a good response for the Glenlivet & Tomintoul area and the drop-in was quite well attended with positive feedback regarding the event and the core paths planning process itself. The process failed to engage with anyone from the 16-24 year old age group although there was reasonable representation in other age groups.

Next Steps

The issues raised and the information gathered throughout the process will be used to inform the development of selection criteria for core paths. The selection criteria will then be used to select core paths for the Cairngorms National Park. The selection criteria and maps of the selected paths will be drawn up into an Interim Draft Core Paths Plan which will be completed by the end of March 2007. This Plan will then be made available for the public to make comment.

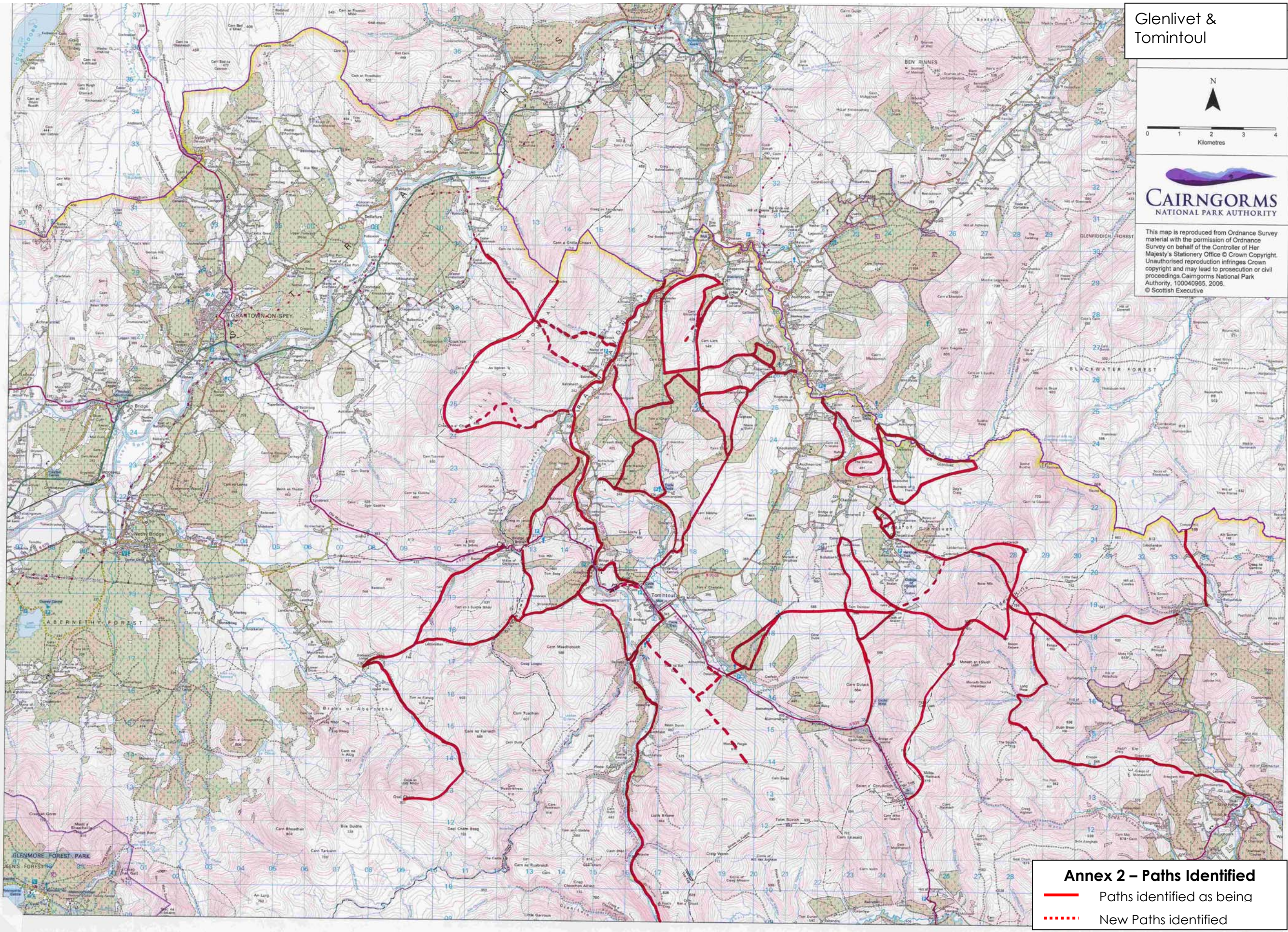
Cairngorms National Park Authority

1 March 2007

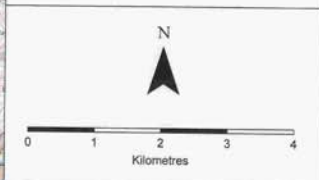
bobgrant@cairngorms.co.uk

Annex 1 - Comments received on maps at the events and in the questionnaires

Where the comment relates to a geographic area on the map the number of the comment has been written on to the map in Annex 2.	
No.	Comment (<i>as written by respondent</i>)
1	This path is not clearly defined I feel! I'd like to see a section, shorter route from Easter Rynaballoch onto the Cromdale Ridge
2	I agree with these choices
3	Create Disabled motor vehicle access to remote parts
4	I'd love to see a route onto Cairn Dregnie from Whitefolds north east of allanreid car park but fear the passing on farmland – thus onwards to Muckle Lappnach Morrylassie Hill.
5	Better pedestrian facility (e.g. improved grass verges) alongside the public highways is the most important need in Glenlivet (<i>not numbered on map in Annex 2</i>)
6	I'm happy with the provision of paths within the Crown Estate (<i>not numbered on map in Annex 2</i>)
7	Would not be happy to see designation of paths in 'wild' parts. (<i>not numbered on map in Annex 2</i>)
8	Routes important to me; allanreid to Morinsh Woods; Tom Dubh Woods; Blairfindy to Carn Daimh; Braes of Glenlivet to Carn Mor & Carn Liath; and East Aucharaich to Tom Trumper via Scalan.
9	Keep wild areas wild without signs (<i>not numbered on map in Annex 2</i>)
10	There are parts of the Speyside Way in this area that badly need upgrading to encourage ore usage. Especially the stretch from Blairfindy Lodge *Glenlivet House) to Carn Daimh & beyond. Great path but can't be enjoyed because you spend your time concentrating on avoiding the peat bogs (<i>not numbered on map in Annex 2</i>)
11	I use all the Glenlivet Estate way marked paths (<i>not numbered on map in Annex 2</i>)



Glenlivet & Tomintoul



This map is reproduced from Ordnance Survey material with the permission of Ordnance Survey on behalf of the Controller of Her Majesty's Stationery Office © Crown Copyright. Unauthorised reproduction infringes Crown copyright and may lead to prosecution or civil proceedings Cairngorms National Park Authority, 100040965, 2006. © Scottish Executive